



These are artist renditions for sales purposes only.  
Refer to working drawings for actual dimensions.  
© 2012 Nationwide Homes 9/11/12



# BLUE RIDGE

Shown with optional exterior features

First Floor: 1,051 sq. ft. finished  
Second Floor: 674 sq. ft. unfinished  
Dimensions: 38'0"W x 27'8"D

QR Code  
Scan using your  
barcode reader app on  
your smart phone to  
see a photos of  
this model



**NATIONWIDE**  
*Homes*  
HIPERFORMANCE BUILDERS

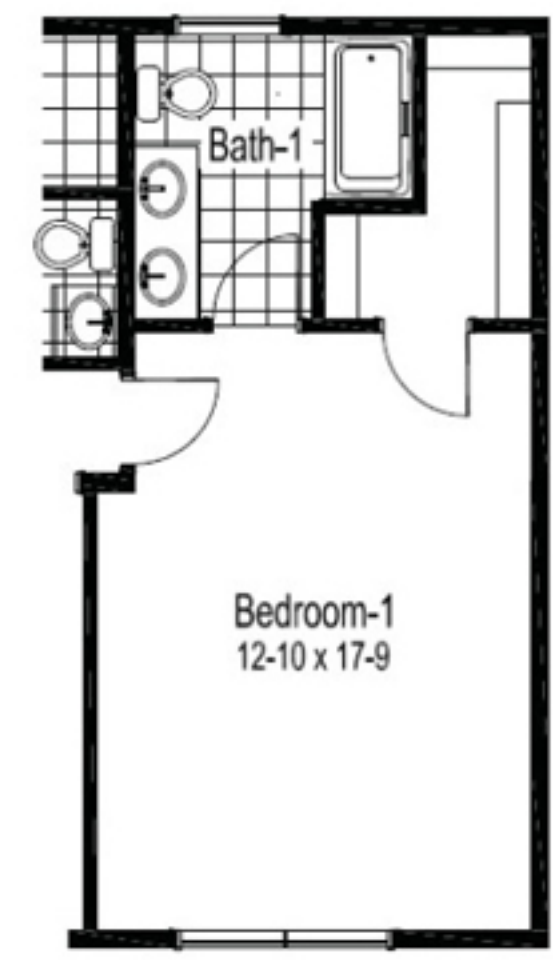
Opt. Garage

38'-0"

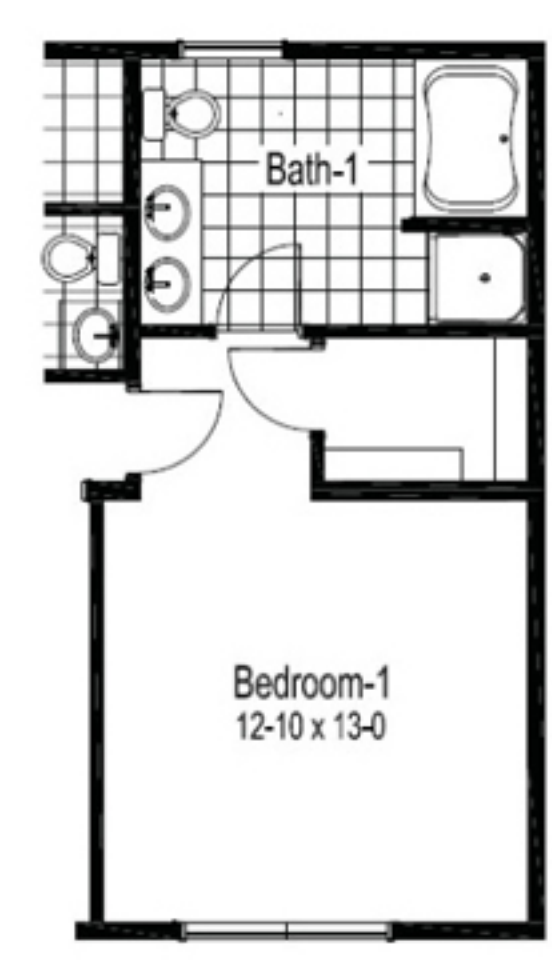
27'-7 3/4"



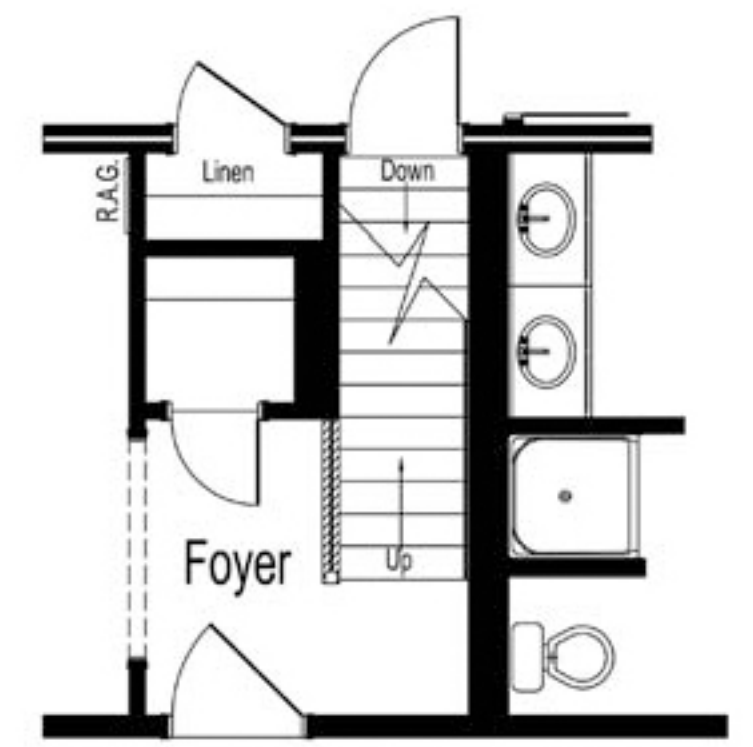
Opt. Porch



Alt. #1 - Extended Master Bedroom

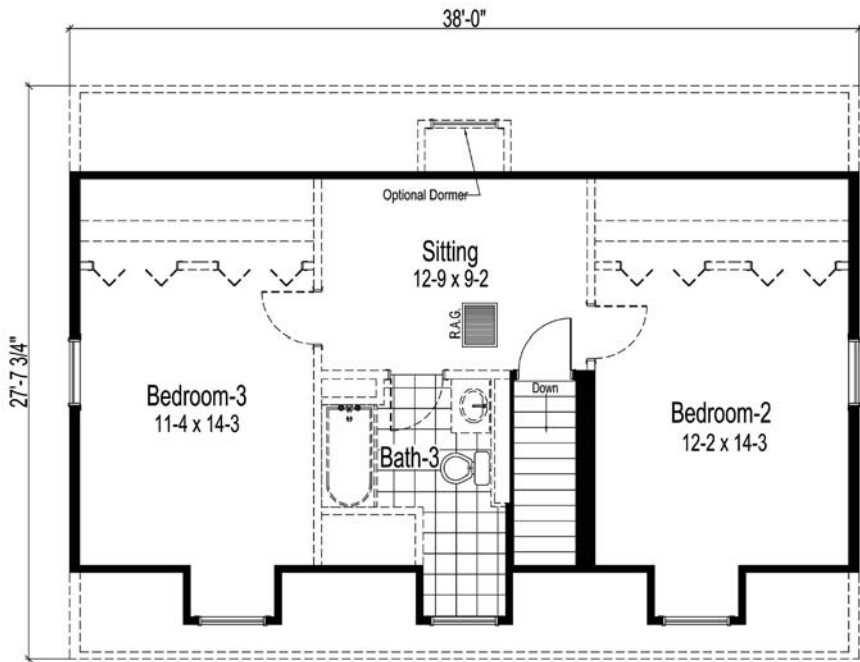


Alt. #2 - Extended Master Bedroom



Opt. Basement Plan

*Legacy*  
Collection



Second Floor